



eBoard LED

MULTI TOUCH SCREEN

The right screen for all purposes





eBoard

A1 eBoard

Unlimited Possibilities With Your Imagination

eBoard is an integrated Interactive Touch Screen that utilises Optical Sensor Technology.

Its applications are limitless, ranging from educational experiences, presentations, boardroom and conference room collaboration to being used as interactive information kiosks. By taking full advantage of the Optical Sensor Technology, the eBoard maintains accuracy, responsiveness and sensitivity, whilst delivering full high definition images in almost any environment.

A1-SYS concepts and ideas are

EASY · SIMPLE · SMART

Captivate your audience when you open applications, navigate the web, use the virtual keyboard to type information, annotate over the top of the displayed information or utilise your existing interactive whiteboard software. The eBoard simply plugs into your laptop, PC, or Mac via the supplied USB cable.

You can also connect wirelessly to your iPad for total control at your fingertips.

eBoard allows you to access content over the network or internet then add hand written comments with the included eBoard pen tool. You can access content including powerpoint, photos, videos, e-learning, video conferencing or distance learning, online content and more.

WHY eBOARD?



50,000 hours Reliable Durability and Accurate Touch Sensor

The lifespan of the LED panel is approximately 50,000 hours (or about 45 years when used 3 hours a day). The eBoard's accurate and responsive dual touch Optical Sensor Technology enables light touch sensitivity all the way to the corners of the screen. Other features include a toughened frame and a scratch, cut and impact resistant 5T glass screen.



High resolution LED screen

eBoard's full HD (1920x1080p) LED screen offers a 170 degree viewing angle ensuring a great view from any position. The toughened anti-glare glass enables you to use the screen under any lighting conditions, minimising eye fatigue and enhancing the audience's viewing experience.



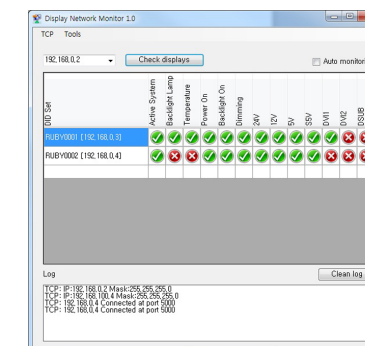
Interactive, Infinite Options

eBoard interactive software comes as standard so you can write, draw, scribble, highlight, circle, change colours, line thickness, erase, undo and so much more... The power is yours and limited only by your imagination.

KEY BENEFITS

- 50,000 hour life with no consumables and no maintenance required
- USB port to interface with PC, laptop or Mac, simply plug and play
- Light touch sensitivity, no pressure is required
- 10 simultaneous touch and gesture capability
- Soft write on the screen: Anti-noise write technology (supports all MS Windows Fonts) Whisper-tip stylus (256 Color and fluorescent pen), right and left hand mouse buttons, drag & drop, keyboard character recognition function
- RGB colour (16,777,216 Colour) 16,000,000-pixel, precise touch resolution
- When combined with the ePodium, your presentations will step up to the next generation of e-learning
- Write/annotate on the eBoard by finger touch or with a stylus pen
- The stylish design makes it easy to mount on a wall or a portable stand

SELF / REMOTE NETWORK DIAGNOSTIC TEST



SELF / PANEL

1. Active System
2. Active Panel Lamp
3. Over Temperature
4. Active Power On
5. Active Backlight On
6. Active Backlight Dimming

POWER

7. Active DC 24V
8. Active DC 12V
9. Active DC M5V
10. Active DC S5V

SOURCE

11. Not Connected No Signal DVI1
12. Not Connected No Signal DVI2
13. Not Connected No Signal RGB

PORTABLE STAND

All of the eBoard's sizes can be securely mounted on this stylish yet robust mobile stand designed for optimum viewing height.

All power and connectivity cabling and even a four way power adaptor can be hidden from view in the cable management compartment which has simple front access and a removable cover ideal to place a PC inside it.

Supplied with 5cm heavy duty wheels, locking and 4 height adjustable feet as standard. Available in contemporary Black framework that will match the eBoard colours.



Whole lectures can be recorded at the press of a button.

Everything shown on the monitor, sound and video can be recorded for distance or e-learning.

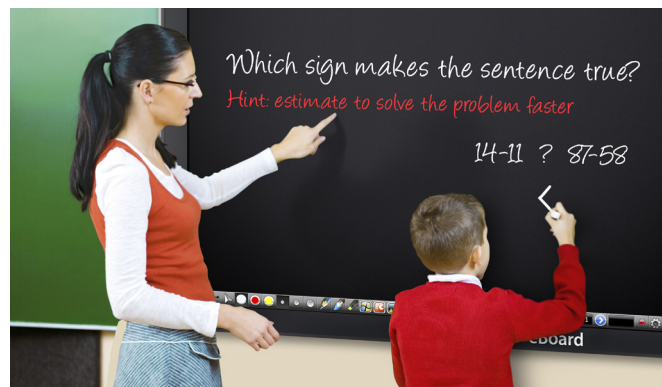


PROFESSIONAL ARENAS

Use more powerful applications when designing, calculating, modelling, or assessing medical situations, to create a 'hands on' example, or for teaching and demonstration purposes.

Conferences & Meetings

- Use it as a presentation medium; share documents annotate or edit in real time, and brainstorm ideas
- Allows you to interact with other people remotely using teleconference, or via an existing network



ENHANCE LEARNING

Make a motivational and encouraging atmosphere in the classroom with a lot of sensor stimulus and captivating activities.

Primary Education

- Allows children to learn and work together simultaneously
- Develops sense of sharing and integrates technology into all aspects of the curriculum

Secondary Education

- Encourages Students to exchange their ideas easily, supporting open discussions
- Helps students to work independently and interact with the teacher at the same time

Higher Education

- Very effective for lecture, long distance learning, and small group tuition settings
- Record lectures so they can be viewed anywhere, and anytime via WAN or LAN
- Create an Information desk where students can search the courses, subjects, view the administrative information, schedules of each department and more



BREAK THE ICE

Engage your customers by placing boards in accessible locations such as lobbies, cafes, or museums, and using games, puzzles and fun galleries for them to interact with.

Entertainment Centre and theme park

- Can be used for children's games, playing video clips, music albums, floor directory information
- Fantastic for displaying interactive information such as attraction guides, photo finders, restaurant bookings and menus, transport time tables, event lists and more

Events & exhibitions

- Eye catching and intuitive
- Immediately engages customers and visitors with the products or services



ENGAGE

Engage with users and customers by allowing them to interact with photos, videos, documents, webpages, global maps and all kinds of different applications.

Hospitality

- Guests can choose their room and check in, compare rooms, and view facilities
- Customers can look up sightseeing options, restaurants, entertainment, shopping locations and check flight times from their rooms or lobby



SPECIFICATION

SPEC CATEGORY		MODEL	eBoard LE55G	eBoard LE65G	eBoard LE70G	eBoard LE55	eBoard LE65	eBoard LE70	eBoard LE55B	eBoard LE65B	eBoard LE70B	eBoard LE84	
PANEL	DID PANEL	INCH	55INCH	65INCH	70INCH	55INCH	65INCH	70INCH	55INCH	65INCH	70INCH	84INCH	
		RESOLUTION(HORIZONTAL)	1920			1920			1920			3840	
		RESOLUTION(VERTICAL)	1080			1080			1080			2160	
		BRIGHTNESS	400	360	400	400	360	400	400	360	400	350	
		CONTRAST RATIO	5000:1 (Typ.)	4000:1 (Typ.)	4000:1 (Typ.)	5000:1 (Typ.)	4000:1 (Typ.)	4000:1 (Typ.)	5000:1 (Typ.)	4000:1 (Typ.)	4000:1 (Typ.)	1600:1 (Typ.)	
		VIEWING ANGLE	178º / 178º			178º / 178º			178º / 178º			178º / 178º	
		PANEL RESPONSE TIME	8ms(Typ. GTG)			8ms(Typ. GTG)			8ms(Typ. GTG)			8ms(Typ. GTG)	
		ASPECT RATIO	16:9			16:9			16:9			18:09	
		REFRESH FREQUENCY	120hz	60hz	60hz	120hz	60hz	60hz	120hz	60hz	60hz	60hz	
		Bezel color / type	Black / Round			Black / Round			Grey			Black / Round	
		LAMP LIFE TIME	Min 30,000 hour			Min 30,000 hour			Min 30,000 hour			Min 30,000 hour	
IP BOARD	INPUT	HDMI	Yes			Yes			Yes			Yes	
		VGA(DSUB)	Yes			Yes			Yes			Yes	
		Component	Yes			Yes			Yes			Yes	
		DVI	Yes			Yes			Yes			Yes	
		DP	Yes			Yes			Yes			Yes	
		Audio	RCA x 1, Phone jack x 1			RCA x 1, Phone jack x 1			RCA x 1, Phone jack x 1			RCA x 1, Phone jack x 1	
Appearance		Frame Material	Metal Frame			Metal Frame			Aluminium Frame			Metal Frame	
Webcam		HD USB Camera	N/A			N/A			Yes			N/A	
ASR Feature		Auto Self-Dignostic A/D Board	Yes			Yes			No			Yes	
OTHERS	REMOTE CONTROL	Included			Included			Included			Included		
	STAND	YES			YES			YES			YES		
	WALL MOUNTABLE	YES			YES			YES			YES		
TOUCH SCREEN	TYPE	Optical sensor			Optical sensor			Optical sensor			Optical sensor		
	RESOLUTION	32767*32767			32767*32767			32767*32767			32767*32767		
	TOUCH ACCURACY	44mm			44mm			44mm			44mm		
	GLASS	5T Protect Glass			5T Protect Glass			5T Protect Glass			5T Protect Glass		
	PC INTERFACE	USB2.0 compatible			USB2.0 compatible			USB2.0 compatible			USB2.0 compatible		
	Number of Touches	Up to 3 point touch			Up to 10 point touch			Up to 10 point touch			Up to 10 point touch		
	DETECTION METHOD	CemeraFinger, brush-pencil, special pen or any opaque object											
TEMP.	TEMPERATURE / HUMIDITY	0° - 35° / 20% - 80%			0° - 35° / 20% - 80%			0° - 35° / 20% - 80%			0° - 35° / 20% - 80%		
POWER	POWER(AC)	100V ~ 240V			100V ~ 240V			100V ~ 240V			100V ~ 240V		
	POWER CONSUMPTION	160W	260W	370W	160W	260W	370W	160W	260W	370W	370W		
	STAND BY POWER CONSUMPTION	UNDER 1W			UNDER 1W			UNDER 1W			UNDER 1W		
DIMENSION	W(mm) x H(mm) x D(mm)	1306 x 800 x 96.7	1550 x 946 x 104.1	1666 x 1012 x 107.6	1306 x 800 x 96.7	1550 x 946 x 104.1	1666 x 1012 x 107.6	1306 x 800 x 96.7	1550 x 946 x 104.1	1666 x 1012 x 107.6	1996 x 1205 x 107.6		
PACKING	SET Box (WxHxD)	1490 x 380 x 1010	1730 x 380 x 1145	1850 x 490 x 1215	1490 x 380 x 1010	1730 x 380 x 1145	1850 x 490 x 1215	1490 x 380 x 1010	1730 x 380 x 1145	1850 x 490 x 1215	2255 X 490 X 1455		
WEIGHT	NET WEIGHT	56kg	93kg	107kg	56kg	93kg	107kg	56kg	93kg	107kg	135kg		
	Gross PACKAGE WEIGHT	65kg	104kg	121kg	65kg	104kg	121kg	65kg	104kg	121kg	155kg		
	PACKAGE WITH PALLET WEIGHT	74kg	127kg	134kg	74kg	127kg	134kg	74kg	127kg	134kg	160kg		
OSD	LANGUAGE	Multi Languages											
ACCESSORIES			Power, D-Sub, HDMI cable, User's Guide, Remote control & Battery										



A1 uTable

INTERACTIVE DISPLAY TABLE SYSTEM

uTable is a touch based screen, just like our eBoards. It is built in a table format for surround presentation, displaying information, and has the ability to recognize up to 10 or 32 simultaneous touches. This enables multiple people to be on the table at the same time. Great for sharing information or for engaging classroom activities where everyone can be hands on at the same time.



10 TO 32 SIMULTANEOUS TOUCH

The powerful sensors recognising 10 to 32 simultaneous touches at the same time enables multiple users to be interacting on the table at the same time. Great for brainstorming ideas at a meeting, allowing attendees to contribute and share photographs or data content. Great for classroom activities where numerous students can physically interact with learning resources at the same time.

VIRTUAL CONTROL

Users can actually control movement and grab any content with their hands/fingers. The uTable recognises gestures making it feel like you have the content in your hand.



360 DEGREE VIEW

Enhance the experience of users and customers as they interact on the table's 360 degree surround viewing angle to view photographs, videos, documents, webpages, global maps and all sorts of different applications.



uTable is ideal to be placed in any environment

- SCHOOL CLASS ROOM
- MEETING ROOMS
- LIBRARY
- FUNCTION ROOMS
- WAITING ROOMS
- BUILDING FOYERS
- SHOP FRONT
- DISPLAY AREAS
- HOSPITALS
with PACS / Bed Status Board
- HALL WAYS
- RESTAURANTS
- SHOW CASES
- EXHIBITIONS
- etc ANY PRESENTATIONS

SPECIFICATION

Model			uTable C40	uTable C42	uTable E46	uTable E55
Panel	Ultra Super Narrow	INCH	40INCH LCD	42INCH LCD	46INCH LED	55INCH LED
		RESOLUTION(HORIZONTAL)	1920	1920	1920	1920
		RESOLUTION(VERTICAL)	1080	1080	1080	1080
		BRIGHTNESS	450cd/m²(Typ.)	700cd/m²(Typ.)	600cd/m²(Typ.)	600cd/m²(Typ.)
		CONTRAST RATIO	3000:1 (Typ.)	3000:1 (Typ.)	3000:1 (Typ.)	3000:1 (Typ.)
		VIEWING ANGLE	178º	178º	178º	178º
		PANEL RESPONSE TIME	8ms(Typ. GTG)	8ms(Typ. GTG)	8ms(Typ. GTG)	8ms(Typ. GTG)
		ASPECT RATIO	16:9	16:9	16:9	16:9
		REFRESH FREQUENCY	60hz	60hz	60hz	60hz
		BEZEL COLOR	White or Yellow	Black	Black	Black
		LAMP LIFE TIME	Min 50,000 hour	Min 50,000 hour	Min 50,000 hour	Min 50,000 hour
SPECIAL FUNCTION		TOUCH	10 POINT / 32 Point	10 POINT / 32 Point	10 POINT / 32 Point	10 POINT / 32 Point
		Fan cooling system	Yes	Yes	Yes	Yes
		Auto dimming control	No	No	No	No
		Wall mount type	Table set	Table set	Table set	Table set
INPUT	USB		2	2	2	2
	POWER SW		1	1	1	1
	IR SENSOR		1	1	1	1
	POWER LED		1	1	1	1
	DSUB (For user pc input)		1	1	1	1
	DVI (For Internal PC input)		1(Internal)	1(Internal)	1(Internal)	1(Internal)
	AC In		1	1	1	1
	LAN		1	1	1	1
Output	External AC Code(For user pc power)				1	1
	SOUND		No	No	No	No
PC			Option	Option	Option	Option
SW			Option	Option	Option	Option
TEMP.	OPERATING TEMP.		0°C ~ 35°C	0°C ~ 35°C	0°C ~ 35°C	0°C ~ 35°C
POWER	POWER(AC)		100V ~ 240V	100V ~ 240V	100V ~ 240V	100V ~ 240V
	POWER CONSUMPTION		260W	220W	240W	270W
DIMENSION	W(mm) x H(mm) x D(mm)		1085 x 500 x 130	1148 x 732 x 764.9	TBD	TBD
WEIGHT	NET WEIGHT		40Kg	60Kg	70Kg	85Kg
	GROSS WEIGHT		50Kg	80Kg	85Kg	95Kg
OSD	LANGUAGE		Multi Languages	Multi Languages	Multi Languages	Multi Languages



Learn more at www.a1-sys.com
For additional questions contact info@a1-sys.com
ACN 114 333 229

